

TypeUnitOrDepartmentHere  
TypeYourNameHere

TypeDateHere

## HOW TO INSTALL PC SUITE

Install PC suite from CD-ROM or you can download the latest version of PC suite from [www.nokia.com/pcsuite](http://www.nokia.com/pcsuite)

If you have latest version of PC suite, then double click the file. Then you have to choose language as following screen (note : following instruction use PC suite ver. 6.82.24.0)



Then click ok, the installation process will be executed



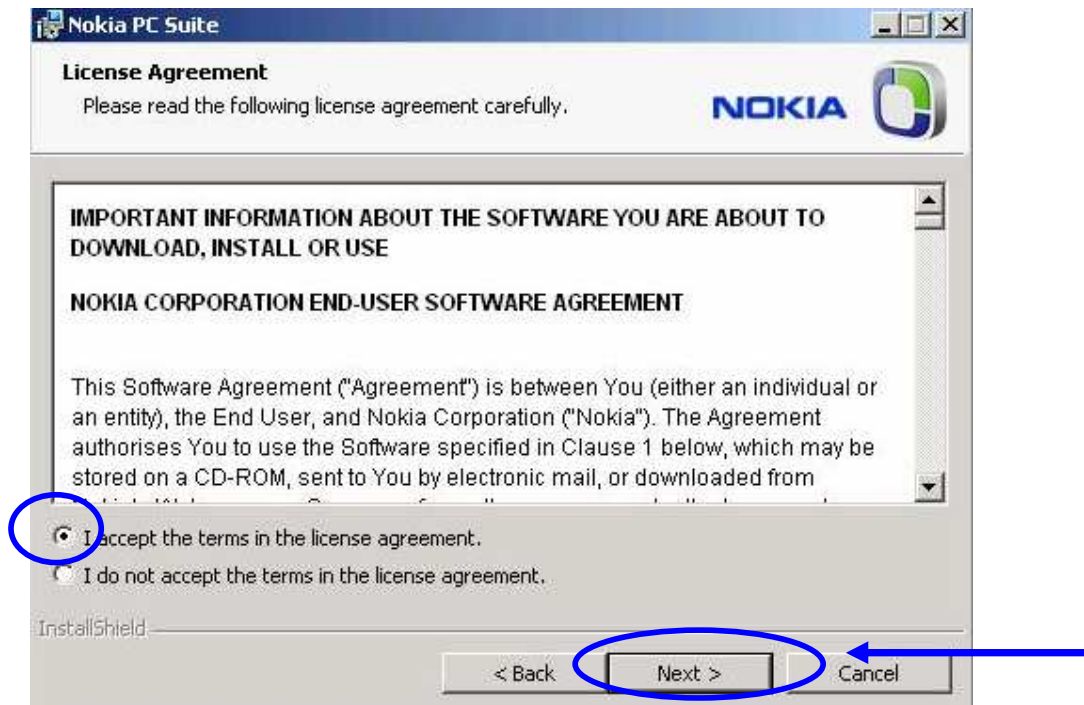
TypeUnitOrDepartmentHere  
TypeYourNameHere

TypeDateHere

Click "Next" in following screen (note : please do not attach the phone to the PC before the installation is finished)



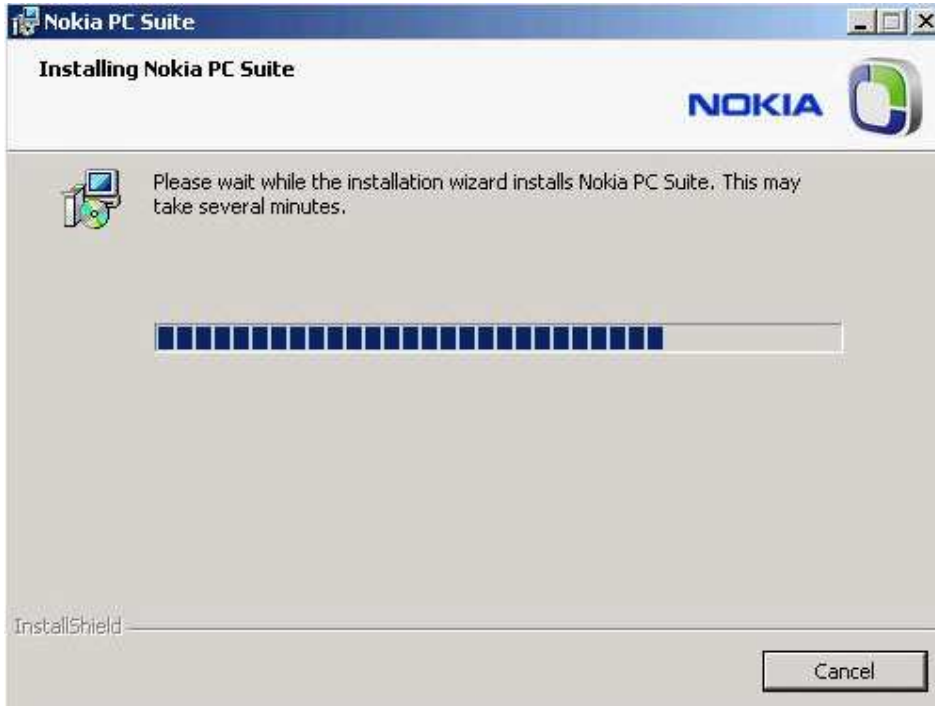
Click "I accept the terms in the license agreement". Then click "Next"



TypeUnitOrDepartmentHere  
TypeYourNameHere

TypeDateHere

Then following screen will be shown. Please wait until the installation process is completed.



Once the installation is completed, then click "Finish"



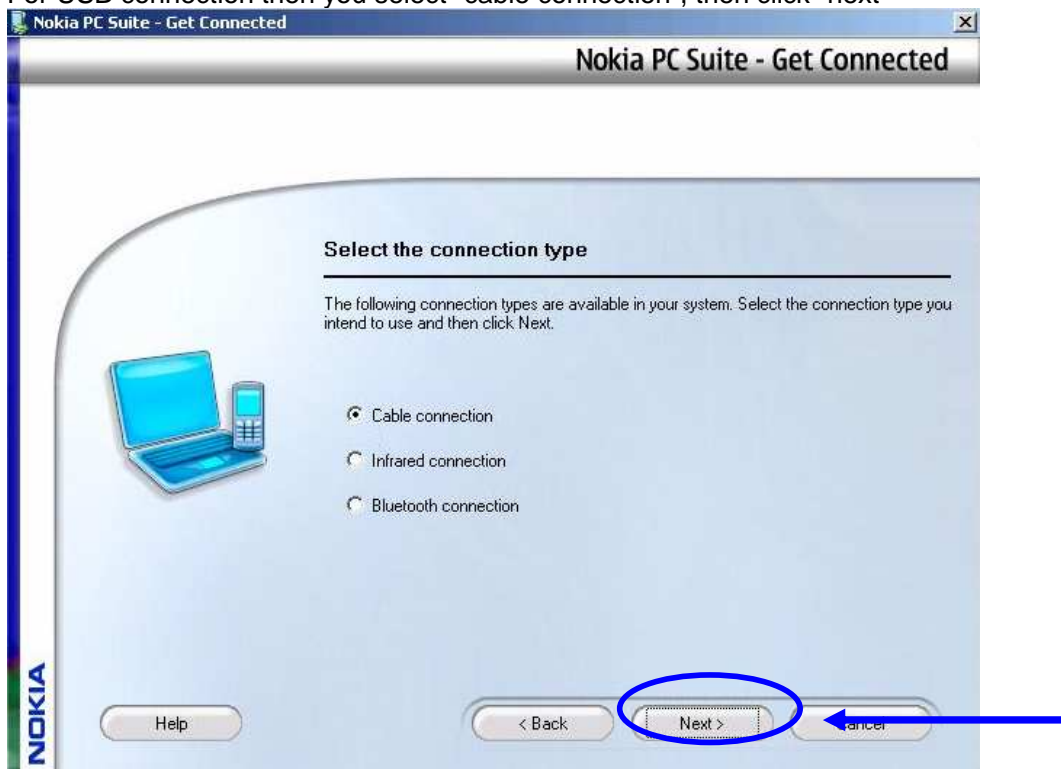
TypeUnitOrDepartmentHere  
TypeYourNameHere

TypeDateHere

You will be prompted “Get Connection Wizard” screen, then click “Next”



For USB connection then you select “cable connection”, then click “next”



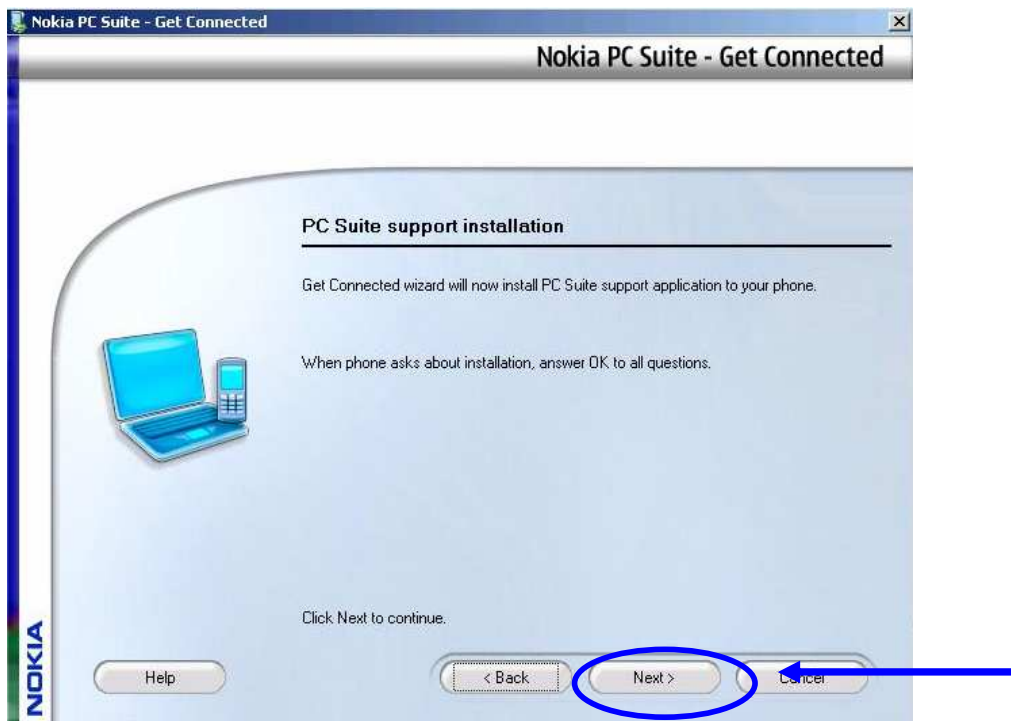
TypeUnitOrDepartmentHere  
TypeYourNameHere

TypeDateHere

In following screen, you connect your phone to PC. PC suite will detect phone connection automatically



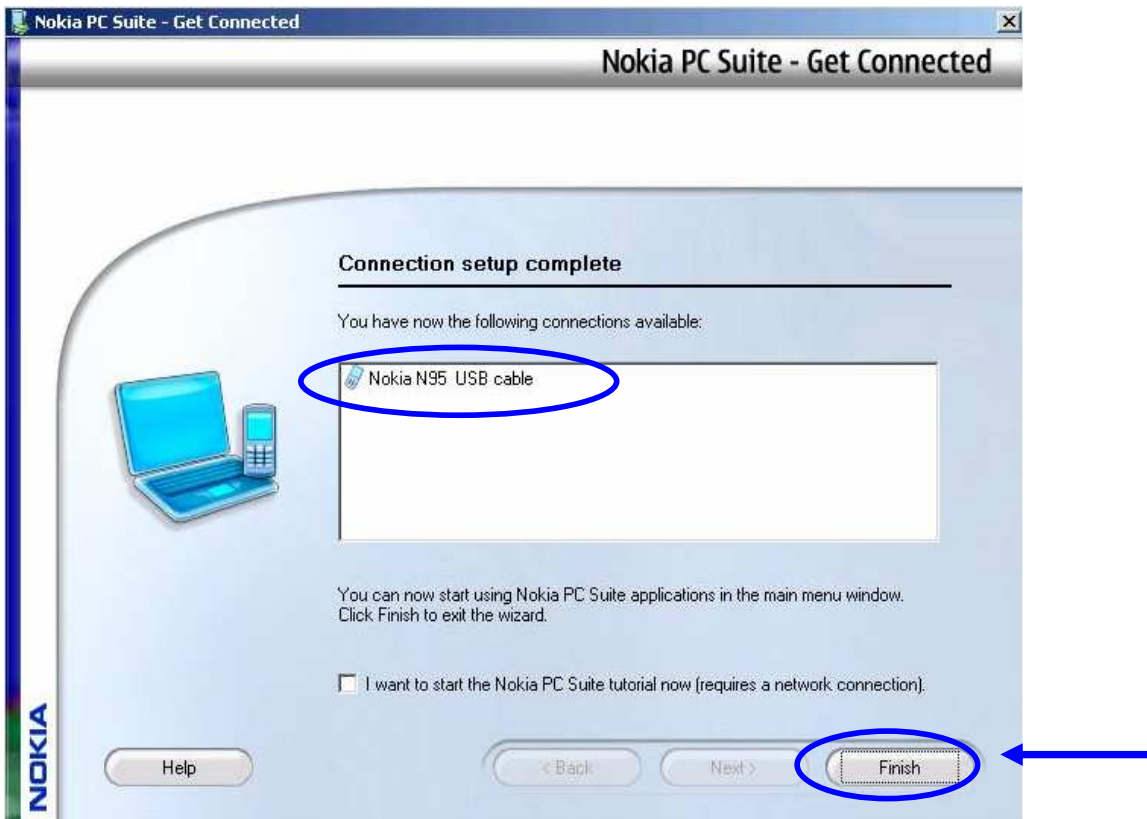
Once the PC suite has detected the phone then click "next"



TypeUnitOrDepartmentHere  
TypeYourNameHere

TypeDateHere

If the phone connection is detected successfully, the following screen will be shown (e.g : this instruction use Nokia N95) and click "Finish"



TypeUnitOrDepartmentHere  
TypeYourNameHere

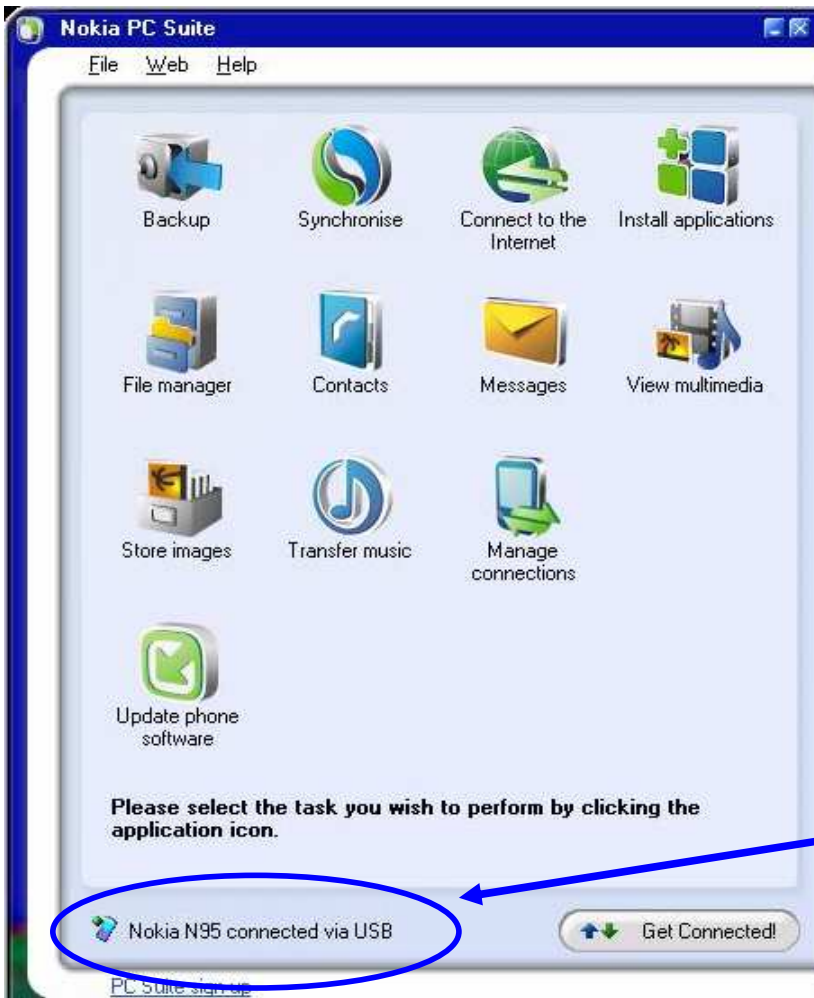
TypeDateHere

## HOW TO CREATE TELKOMSEL BROADBAND CONNECTION

Click PC suite icon in your windows screen



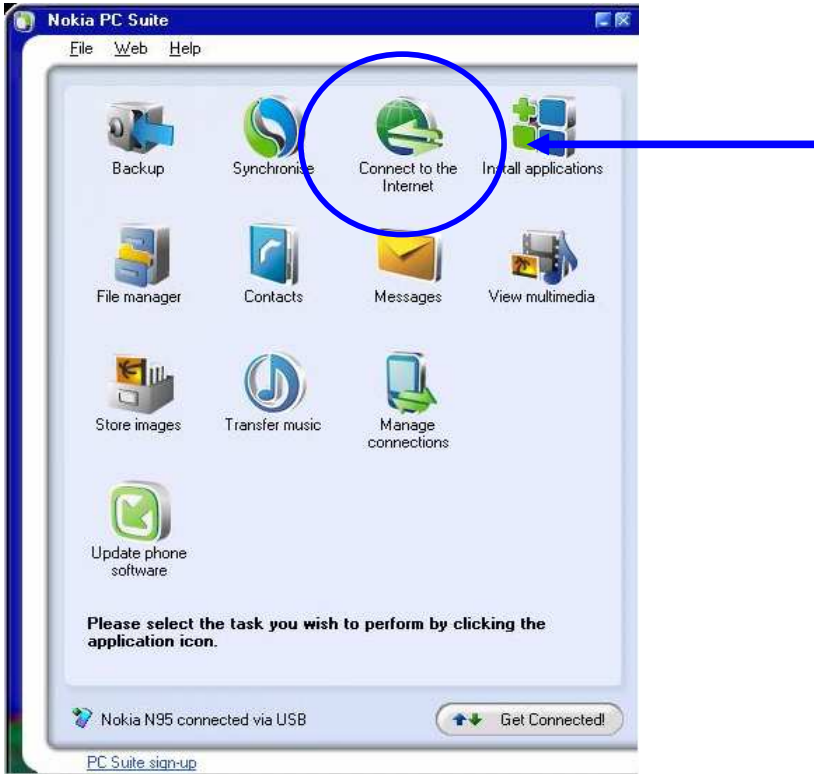
Make sure the phone is connected to your computer as shown in following screen (e.g : this instruction use Nokia N95)



TypeUnitOrDepartmentHere  
TypeYourNameHere

TypeDateHere

Then in following screen, select "Connect to the Internet"



Select "setting" in following screen :



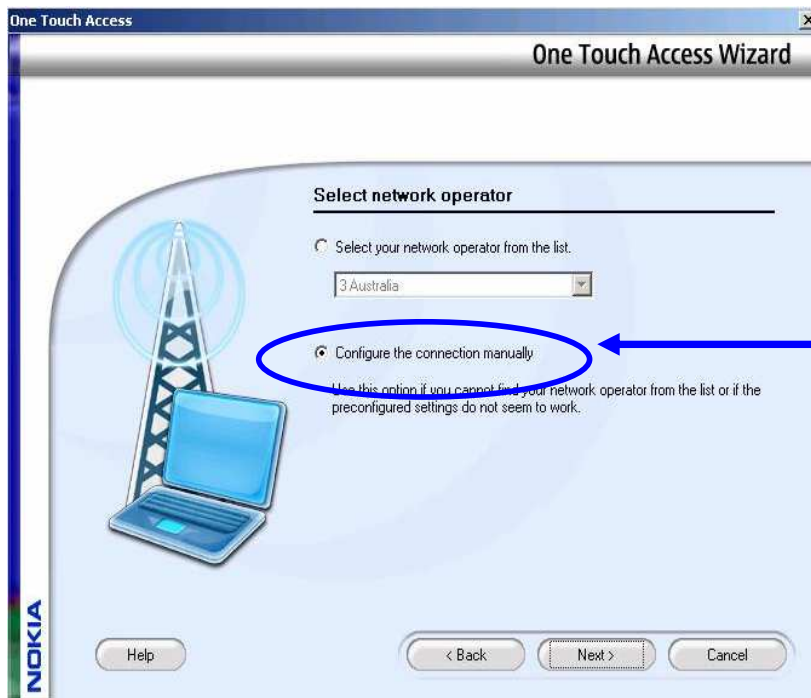
TypeUnitOrDepartmentHere  
TypeYourNameHere

TypeDateHere

Make sure you are selecting the proper modem in the modem list, then click “Next”



Then, select “configure the connection manually” as following screen and click “next”



TypeUnitOrDepartmentHere  
TypeYourNameHere

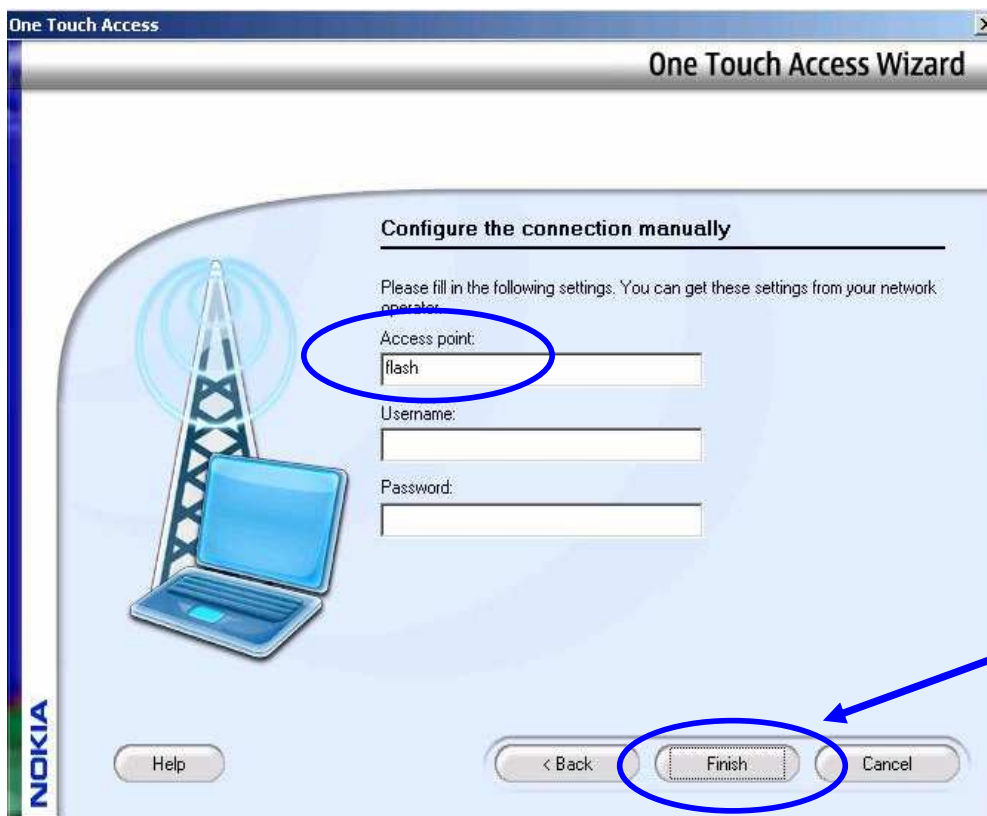
TypeDateHere

Under following screen, then please fill following setting :

**Access point : flash**

Note : Please just leave blank for username and password

Then click "Finish"



TypeUnitOrDepartmentHere  
TypeYourNameHere

TypeDateHere

Then select "connect" to start Telkomsel Broadband connection



Please wait until authentication process is completed



TypeUnitOrDepartmentHere  
TypeYourNameHere

TypeDateHere

You will get “connected” message if the Telkomsel Broadband connection is established.



TypeUnitOrDepartmentHere  
TypeYourNameHere

TypeDateHere